

Barclay Enterprises, Inc. Perma-Pad® Installation Instructions



Tools Needed-

- Phillips Head Screwdriver #2 head
- Standard Flathead Screwdriver (small)
- Standard Alcohol
- 2 ea. Soft cleaning rags (1 to use for cleaning, 1 to lay the phone down on)

**** For additional assistance and step by step procedures view via a movie presentation, please visit our website at- <http://www.barclaytel.com/install-permapad.wmv>**

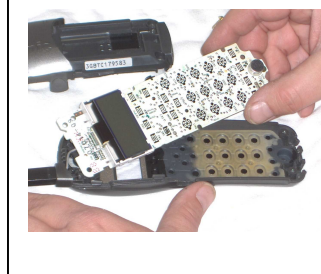
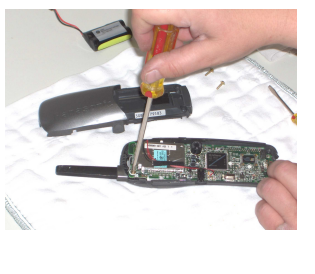
STEP 1- Remove the Battery Cover, Battery and the two screws that hold the housing together at the bottom of the phone.



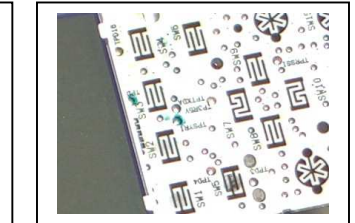
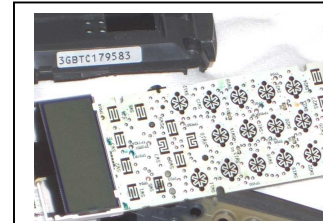
STEP 2- Separate the front and back housing at the bottom by about 1/3 of an inch, keeping your finger between the two to keep it separated. Use the small flathead screwdriver to pop the sides of the housing open. Once separated, the back housing will pull away from the front housing. **CAUTION-** When popping the housing open on the sides, be careful not to let the screwdriver slide into the unit and damage the internal circuitry.



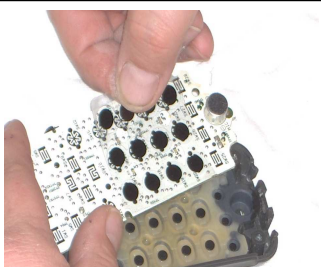
STEP 3- Remove the screw holding the antenna, and carefully lift up the circuit board and turn it over clockwise and away from the housing exposing the circuit contacts. **CAUTION-** Do this with care, not to pull on the receiver wires.



STEP 4- Apply the alcohol to your cleaning rag and wipe away all the grime and debris from the circuit board contacts. Repeat this procedure until you can take your bare finger and touch the contact area and not feel any sticky residue. If the grime is thick and built up you can apply liberal amounts of alcohol to the contact area and let it sit for a minute or two to loosen up the thicker parts of the grime before wiping away.



STEP 5- Take one PadMate™ and carefully peel the backing off the self adhesive side. Carefully apply the PadMate™ to the dialing button area of the printed circuit board by using the notches in the corners to align the PadMate™ properly while looking through the clear PadMate™ ensuring the black contacts are aligned with the contacts on the circuit board. If you don't align it properly the first time don't worry, you can peel it back off for another try. Once you have aligned it properly, you can use your finger to flatten out the edges to seal it well to keep out the grime and debris.



STEP 6- At this point you can install a new button pad, or if your re-installing your old button pad, clean it first with your rag and the alcohol, using your rag wipe off any excess debris from your old button pad. Set the button pad in the upper housing plastic with the buttons facing outward. Now you will take the circuit board and turn it over and install it in the upper housing. You then install the antenna and secure the board and antenna with the antenna screw in the housing. Ensure your speaker wires are tucked away from the headset jack so not to get pinched when closing the housing. At this point turn the phone around so you can see the button pad and ensure none of the buttons are "stuck" down or under the plastic. Take the rear housing and snap it onto the front housing starting at the top of the housings near the antenna. Squeeze the housing together and install the two bottom screws, then tighten well.

